



print | copy | scan | fax

**Consumables**

Drum Cartridge CT350390  
(42,000 pages<sup>^</sup> for monochrome or 10,500 pages<sup>^</sup> for colour)

High Capacity Toner Cartridges (4,000 pages\*)  
High Capacity Toner Cartridge Yellow CT200652  
High Capacity Toner Cartridge Magenta CT200651  
High Capacity Toner Cartridge Cyan CT200650  
High Capacity Toner Cartridge Black CT200649

Standard Capacity Toner Cartridges (1,500 pages\*)  
Std Capacity Toner Cartridge Yellow CT200922  
Std Capacity Toner Cartridge Magenta CT200921  
Std Capacity Toner Cartridge Cyan CT200920

**Options**

256MB Memory E3100027

\* Capacities are approximate, based on 5% coverage on an A4-size page.  
<sup>^</sup> Life expectancy is based on A4-size pages. Mixed printing patterns and specialty media, may significantly reduce the unit life.

Printer is delivered with 4,000 pages of black toner and 1,500 pages of each colour toner.

For more information or for your nearest authorised Fuji Xerox Printers reseller, visit our web site or call:

Australia 1300 793 769  
New Zealand 0800 993 769

[www.fxprinters.com](http://www.fxprinters.com)

CONFIGURATIONS	DocuPrint C2090 FS
<b>Print</b>	Colour Laser
Technology	Colour Laser
Speed	Up to 5ppm colour/25ppm monochrome
Resolution	600 x 600dpi with IE 2400dpi <sup>1</sup>
First Page Out Time	21 sec colour/ 12 sec monochrome (ready mode)
Print Language	GDI
Maximum Monthly Print Volume	Up to 45,000 pages/month
<b>Copy</b>	
Speed	Up to 5cpm colour/20cpm monochrome
Resolution	Up to 600 x 600 dpi
First Copy Out Time	Less than 26.5 sec colour <sup>2</sup> / 12 sec monochrome <sup>3</sup> (readymode)
Zoom	25 – 400%
Multi Copy	1 – 99 pages
<b>Scan</b>	
Resolution	Optical: 1200 x 1200 dpi Enhanced: up to 4800 x 4800 dpi
Scanner Image Sensor	CCD
Depth	24-bit colour, 8-bit gray
Max Document Size	Legal 14" (ADF) A4/Letter (Flatbed)
Bundled Software	DocuWorks 5.0, Acrobat Reader 5.05 <sup>®</sup>
<b>Fax</b>	
Fax Speed	33.6kbps (Super G3)
Transmission Speed	3sec/page
Page Memory	4MB
One Touch/Speed Dials	8/99
<b>General</b>	
Input Capacity	200 sheets
Output Capacity	250 sheets face down
ADF Capacity	50 sheets
Processor	ARM Twin CPUs (ARM7 150MHz, ARM9 125MHz)
Memory (Std/Max)	96MB / 352MB
Dimensions/ Weight	498 x 475 x 685mm (with ADF)/ 32kg (w/o consumables)
Supported Operating Systems	Windows Server™ 2000/2003, Windows® 2000/XP(Home&Pro)/XP64 Edition
Interfaces	Ethernet (100BASE-TX/10BASE-T) for Print/Scan to FTP/Webconfig, USB2.0 for PC Connection, USB1.1 for USB memory device
<b>Warranty</b>	One year on-site warranty

<sup>1</sup> . IE for monochrome print only  
<sup>2</sup> . \*3. 300dpi

**SPECIFICATIONS**

**Printing**

**Paper Weight:** 60-216 gsm  
**Protocol and Transport:** LPD & Port9100 by TCP/IP  
**Paper Size:** PostCard, A4, B5, A5, Letter, Executive, Legal-13, Legal-14, Envelope (com-10, Monarch, DL, C5)  
User defined: width 90mm - 215.9mm, length: 139.7mm - 355.6mm  
**Paper Type:** Plain, Bond, OHP, Heavyweight1, Heavyweight2, Coated1, Coated2, Coated3, Label, PostCard, envelope  
**Multiple Up:** Yes  
**Collate:** Yes

**Scanning**

**Scan Area:** Up to A4/Letter (@Flatbed), Up to Legal14 (@ADF)  
**Scan Speed (Full Colour):** 3ms/line (600dpi x 600dpi) (Flatbed scan)  
**Scan Speed (B/W):** 0.75ms/line (600dpi x 600dpi) (Flatbed Scan)  
**Distribution: PC**  
Resolution: 50dpi~4800dpi step 1dpi  
Connectivity: USB2.0 (TWAIN/WIA) Ethernet (Network TWAIN)  
**Distribution: FTP-Site**  
Resolution: 150dpi, 300dpi, 600dpi, 1200dpi  
File Type: Windows BMP, TIFF, JPEG (.jpg)  
Connectivity: Ethernet (10BASE-T / 100BASE-TX)  
**Distribution: USB-Key**  
Resolution: 150dpi, 300dpi, 600dpi, 1200dpi  
File Type: Windows BMP, TIFF, JPEG (.jpg)  
Connectivity: USB1.1

**Copying**

**Document size:** ADF: Post Card (Similar A6), A4, B5, A5, Letter, Executive, Legal-13, Legal-14  
**Flat bed:** A4, B5, A5, Letter, Executive

**Faxing**

**Line Mode:** PSTN, PB (Push Button)  
**Broadcasting:** Yes  
**Quick Scan (seconds / page):** 7 seconds / page  
**Fax Forwarding:** Yes  
**FAX Address Book:** One Touch 8 + Speed 99 = Total 107 entry  
**Answering Phone support:** Yes

**Supporting Protocols**

**Transport:** TCP/IP  
**Network Protocol:** HTTP, FTP, SNMP

**Environment**

**Maximum Power Consumption:** 220-240V 790W  
**Voltage Required:** 220/240V: 220-240V AC+/-10%(198-264V)  
50+/-3Hz/60+/-3Hz  
**Humidity & Temp Range / Operating & Non Operating**  
Operating: 5/32°C, 15/85%RH  
Non Operating: -20/40°C, 5/85%RH

**Customer Support**

One year on-site warranty plus web and telephone technical support. Optional extended warranties available.

**Warranty varies by location**

For details please check with your local Fuji Xerox Printers office (AUS: 1800 811 177, NZ: 0800 449 177) or online at [www.fxprinters.com](http://www.fxprinters.com)

Colour All-In-One,  
**Perform**  
at your best.



**Fuji Xerox Printers**



# DocuPrint C2090 FS

Colour Multifunction Laser Printer

print | copy | scan | fax

The DocuPrint C2090 FS

## High performance full colour, network ready 4-in-1 for small workgroups

When it comes to features, flexibility and size, the DocuPrint C2090 FS is a break-through solution for workgroups.

Whether you're printing, copying, scanning or faxing, it gives you the freedom of full-featured performance to work at your very best.

Based on an award-winning printer engine, a robust and proven performer, the DocuPrint C2090 FS combines leading edge technology with a compact desktop design.

Not only is the DocuPrint C2090 FS a high performance, full-colour network ready multifunction laser, it's also affordable.



### Improve Efficiency

Network ready, the DocuPrint C2090 FS can integrate quickly and seamlessly into your office network.

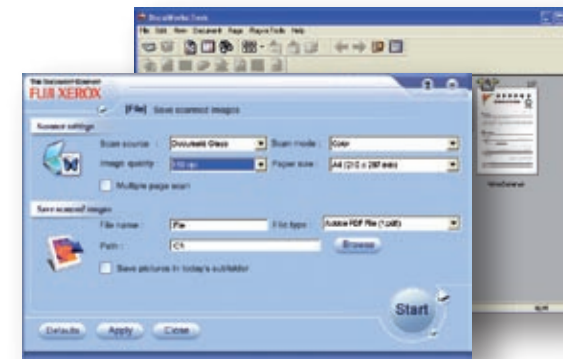
- A compact size, it fits easily into a busy office environment – 498 x 475 x 685mm.
- An intelligent 'Scan ToolBox' makes optimising scan functions from your computer simple.
- A convenient 200 sheet input capacity as standard.
- With plenty of internal memory, you can save time by scanning directly to USB or to your local PC or even up to 5 FTP locations.

### Increase Performance

Experience fast print speeds of up to 25 pages-per-minute for black and white and 5 pages-per-minute for colour.

- Enhanced scanning resolution up to 4800 x 4800 dpi.
- Fast copy speeds – the first black and white copy is out in just 12 seconds and only 26.5 seconds for colour.
- High quality colour prints up to a crisp 600 x 600 dpi and mono IE up to 2400 dpi.

## Powerful software for greater productivity



### DocuWorks 5.0

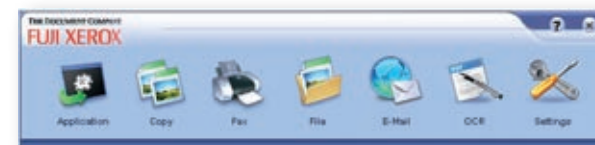
The DocuPrint C2090 FS comes bundled with the powerful Fuji Xerox DocuWorks 5.0 software.

DocuWorks 5.0 boasts rich annotation features and a strong 128bit encryption feature for security, efficient file compression and easy document handling.

### Scan ToolBox

To lift productivity and efficiency to a whole new level, the DocuPrint C2090 FS comes complete with Fuji Xerox's own innovative software management tool "Scan ToolBox".

With Scan ToolBox you can optimise scan functions from your desktop, choose from 7 scan functions including everything from customising scanner connections to maintaining your fax phone book – Scan ToolBox puts complete control at your fingertips.



*Direct scan to USB memory allows you to store scanned data easily and quickly without the need of a PC*

More features,  
more options,  
more performance,  
at the right price.

### Printer

The heart of the DocuPrint C2090 FS is based on a superbly reliable print engine, featuring multiple-ups, watermarks and advanced features for graphic prints.

### Copier

There's a wide choice of copy image settings, you can even select advanced copy functions such as Image Quality, Brightness, 2-in-1, Background Removal and options such as 'collate copy'.

### Scanner

With 7 scan functions to choose from scanning is very simple. You can even scan directly to your USB connected PC or to FTP locations and, using its ingenious Direct Scan to USB memory function, you don't even need a PC.

### Facsimile

An impressive 4MB internal memory allows storage of hundreds of pages, plus it's very quick with fax speeds of up to 33.6 Kbps (Super G3). You can also store up to 107 fax addresses for increased efficiency.

